

CREEK SIDE 18

THE FLOOR PLANS

خـبـور دـبـيـا
DUBAI CREEK HARBOUR

الخيران
THE LAGOONS

DUBAI
HOLDING



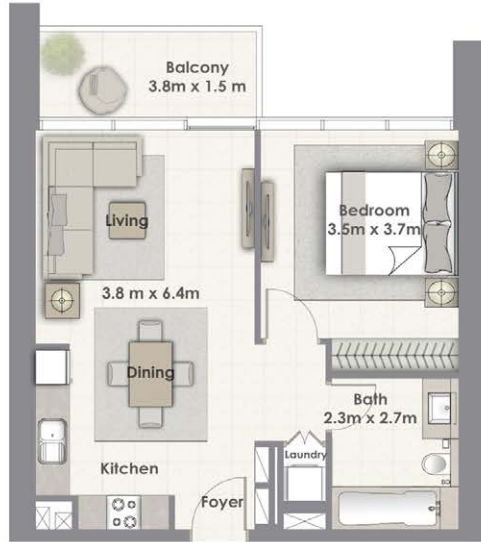
CREEKSIDE 18

Tower A

1. All materials, dimensions & drawings are approximate. 2. Information is subject to change without notice.
3. Actual suite area may vary from the stated area. 4. Drawings not to scale.
5. The developer reserves the right to make revisions/alterations without any liability whatsoever.

CREEKSIDE 18

Type 1



1 BEDROOM W / BALCONY TOWER A UNIT 01 / LEVEL 2-16, 18-33

Suite Area	611.00 Sq.ft. / 56.74 Sq.m.
Balcony Area	69.00 Sq.ft. / 6.38 Sq.m.
Total Area	680.00 Sq.ft. / 63.12 Sq.m.



1. All materials, dimensions & drawings are approximate. 2. Information is subject to change without notice.
3. Actual suite area may vary from the stated area. 4. Drawings not to scale.
5. The developer reserves the right to make revisions/alterations without any liability whatsoever.

CREEKSIDE 18

Type 2



2 BEDROOM W / BALCONY TOWER A UNIT 02 / LEVEL 2-16, 18-33

Suite Area	1071.00 Sq.ft. / 99.54 Sq.m.
Balcony Area	63.00 Sq.ft. / 5.86 Sq.m.
Total Area	1134.00 Sq.ft. / 105.40 Sq.m.



1. All materials, dimensions & drawings are approximate. 2. Information is subject to change without notice.
3. Actual suite area may vary from the stated area. 4. Drawings not to scale.
5. The developer reserves the right to make revisions/alterations without any liability whatsoever.

CREEKSIDE 18

Type 3



3 BEDROOM W / BALCONY TOWER A UNIT 03 / LEVEL 2-16, 18-33

Suite Area 1481.00 Sq.ft. / 137.63 Sq.m.
Balcony Area 150.00 Sq.ft. / 13.97 Sq.m.
Total Area 1631.00 Sq.ft. / 151.60 Sq.m.



1. All materials, dimensions & drawings are approximate. 2. Information is subject to change without notice.
3. Actual suite area may vary from the stated area. 4. Drawings not to scale.
5. The developer reserves the right to make revisions/alterations without any liability whatsoever.

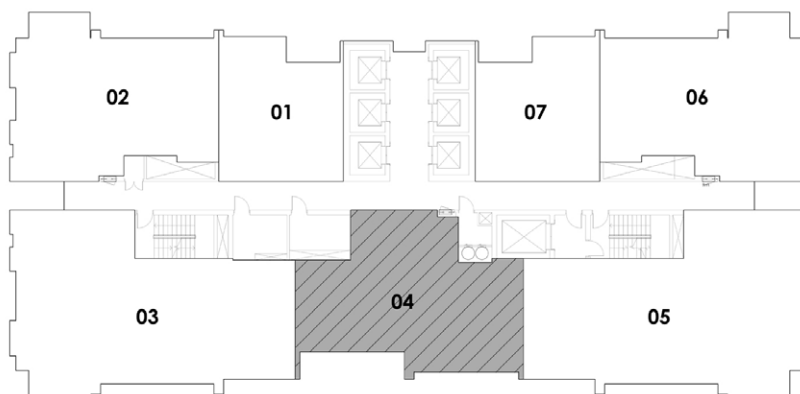
CREEKSIDE 18

Type 4



2 BEDROOM W / BALCONY TOWER A UNIT 04 / LEVEL 2-16, 18-33

Suite Area	1013.00 Sq.ft. / 94.09 Sq.m.
Balcony Area	120.00 Sq.ft. / 11.18 Sq.m.
Total Area	1133.00 Sq.ft. / 105.27 Sq.m.



1. All materials, dimensions & drawings are approximate. 2. Information is subject to change without notice.
3. Actual suite area may vary from the stated area. 4. Drawings not to scale.
5. The developer reserves the right to make revisions/alterations without any liability whatsoever.

CREEKSIDE 18

Type 5



3 BEDROOM W / BALCONY TOWER A UNIT 05 / LEVEL 2-16, 18-33

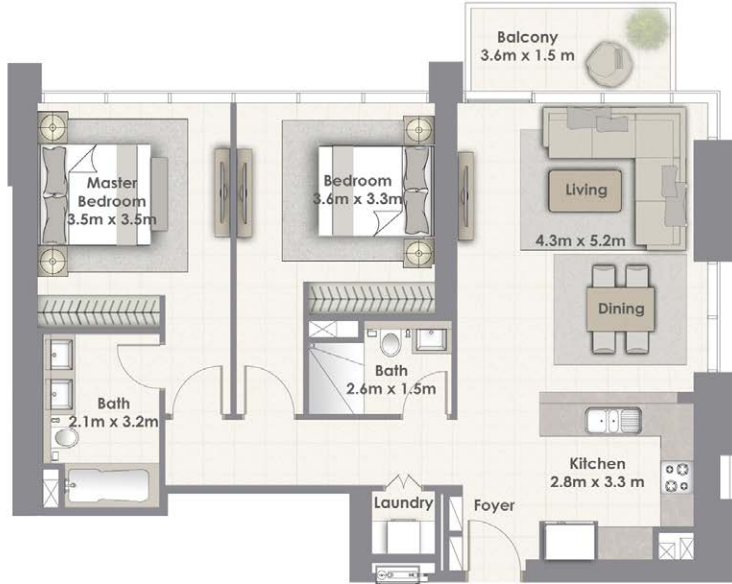
Suite Area	1480.00 Sq.ft. / 137.48 Sq.m.
Balcony Area	150.00 Sq.ft. / 13.97 Sq.m.
Total Area	1630.00 Sq.ft. / 151.45 Sq.m.



1. All materials, dimensions & drawings are approximate. 2. Information is subject to change without notice.
3. Actual suite area may vary from the stated area. 4. Drawings not to scale.
5. The developer reserves the right to make revisions/alterations without any liability whatsoever.

CREEKSIDE 18

Type 6



2 BEDROOM W / BALCONY TOWER A UNIT 06 / LEVEL 2-16, 18-33

Suite Area	1070.00 Sq.ft. / 99.39 Sq.m.
Balcony Area	63.00 Sq.ft. / 5.86 Sq.m.
Total Area	1133.00 Sq.ft. / 105.25 Sq.m.



1. All materials, dimensions & drawings are approximate. 2. Information is subject to change without notice.
3. Actual suite area may vary from the stated area. 4. Drawings not to scale.
5. The developer reserves the right to make revisions/alterations without any liability whatsoever.

CREEKSIDE 18

Type 7



1 BEDROOM W / BALCONY TOWER A UNIT 07 / LEVEL 2-16, 18-33

Suite Area	611.00 Sq.ft. / 56.74 Sq.m.
Balcony Area	69.00 Sq.ft. / 6.38 Sq.m.
Total Area	680.00 Sq.ft. / 63.12 Sq.m.



1. All materials, dimensions & drawings are approximate. 2. Information is subject to change without notice.
3. Actual suite area may vary from the stated area. 4. Drawings not to scale.
5. The developer reserves the right to make revisions/alterations without any liability whatsoever.

CREEK SIDE 18

THE FLOOR PLANS

خـور دـبـيـا
DUBAI CREEK HARBOUR

الخيران
THE LAGOONS

DUBAI
HOLDING

